



## Elsewhere2 (2003–2006)

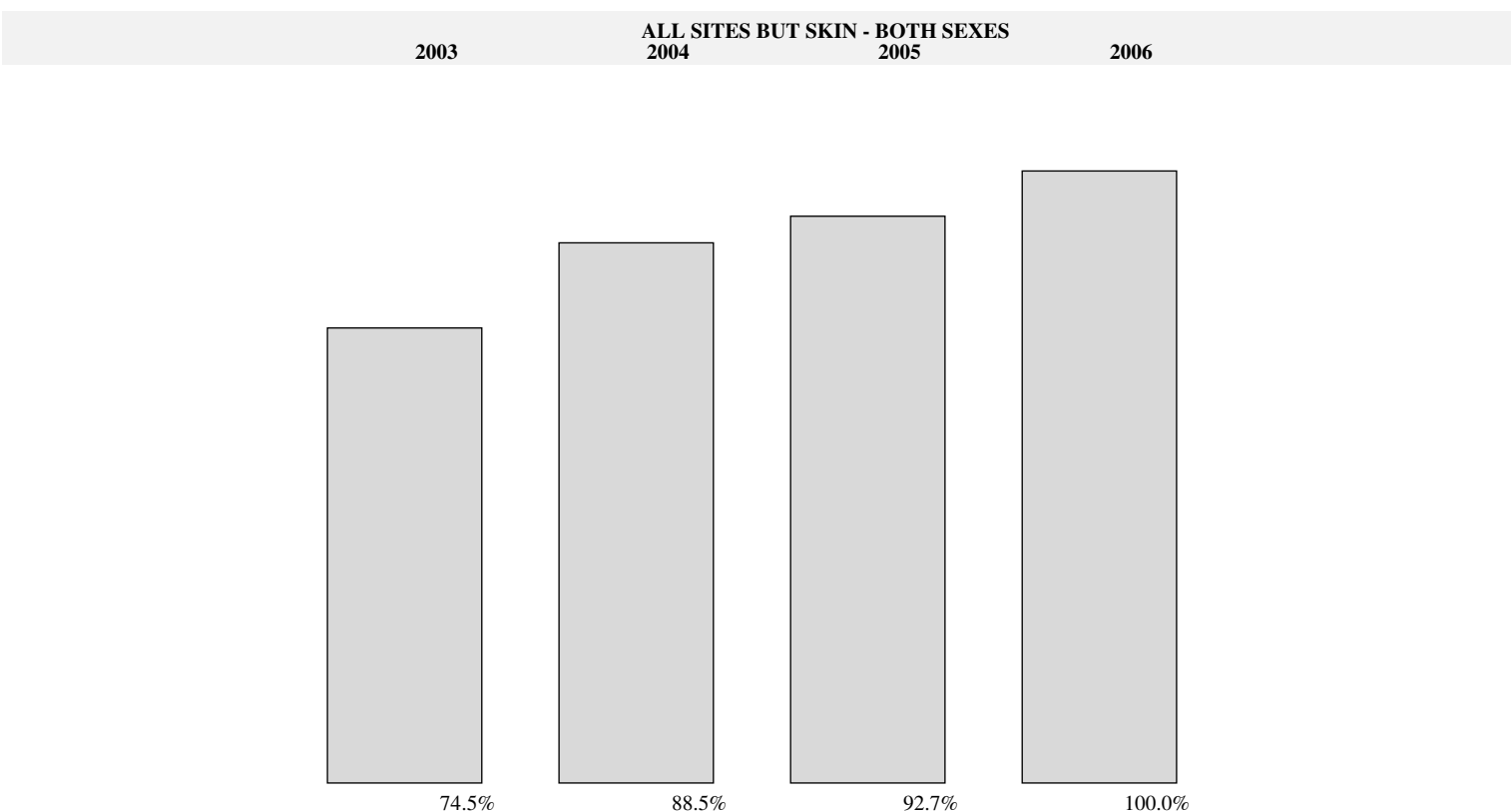
### CI5 volume X (editorial table 1)

Number of cases in major diagnosis groups in single calendar years of observation

SITE	MALE					Total
	2003	2004	2005	2006		
Lip, oral cavity and pharynx (C00–14)	42 (12.1)	43 (9.7)	49 (10.3)	42 (8.6)	176 (10.0)	
Digestive organs (C15–26)	73 (21.0)	95 (21.4)	79 (16.5)	103 (21.1)	350 (19.9)	
Respiratory organs (C30–39)	43 (12.4)	55 (12.4)	59 (12.3)	66 (13.5)	223 (12.7)	
Bone, cartilage, melanoma (C40–43)	8 (2.3)	12 (2.7)	15 (3.1)	15 (3.1)	50 (2.8)	
Male genital (C60–63)	97 (27.9)	139 (31.3)	143 (29.9)	126 (25.8)	505 (28.7)	
Urinary organs (C64–68)	21 (6.0)	15 (3.4)	29 (6.1)	21 (4.3)	86 (4.9)	
Eye, brain, thyroid etc. (C69–75)	11 (3.2)	15 (3.4)	14 (2.9)	23 (4.7)	63 (3.6)	
Haematopoietic (C81–96)	33 (9.5)	41 (9.2)	54 (11.3)	61 (12.5)	189 (10.7)	
Other and unspecified	20 (5.7)	29 (6.5)	36 (7.5)	32 (6.5)	117 (6.7)	
All sites but skin (C00–96bC44)	348 (100.0)	444 (100.0)	478 (100.0)	489 (100.0)	1759 (100.0)	

SITE	FEMALE					Total
	2003	2004	2005	2006		
Lip, oral cavity and pharynx (C00–14)	7 (1.3)	10 (1.6)	15 (2.4)	7 (1.0)	39 (1.6)	
Digestive organs (C15–26)	79 (14.7)	84 (13.8)	100 (16.0)	131 (18.7)	394 (15.9)	
Respiratory organs (C30–39)	20 (3.7)	21 (3.4)	27 (4.3)	34 (4.8)	102 (4.1)	
Bone, cartilage, melanoma (C40–43)	10 (1.9)	20 (3.3)	12 (1.9)	12 (1.7)	54 (2.2)	
Breast (C50)	181 (33.6)	215 (35.2)	204 (32.6)	220 (31.3)	820 (33.1)	
Female genital (C51–58)	125 (23.2)	136 (22.3)	145 (23.2)	164 (23.4)	570 (23.0)	
Urinary organs (C64–68)	13 (2.4)	9 (1.5)	10 (1.6)	4 (0.6)	36 (1.5)	
Eye, brain, thyroid etc. (C69–75)	30 (5.6)	41 (6.7)	39 (6.2)	44 (6.3)	154 (6.2)	
Haematopoietic (C81–96)	41 (7.6)	46 (7.5)	41 (6.5)	45 (6.4)	173 (7.0)	
Other and unspecified	33 (6.1)	28 (4.6)	33 (5.3)	41 (5.8)	135 (5.5)	
All sites but skin (C00–96bC44)	539 (100.0)	610 (100.0)	626 (100.0)	702 (100.0)	2477 (100.0)	

SITE	BOTH SEXES					Total
	2003	2004	2005	2006		
Lip, oral cavity and pharynx (C00–14)	49 (5.5)	53 (5.0)	64 (5.8)	49 (4.1)	215 (5.1)	
Digestive organs (C15–26)	152 (17.1)	179 (17.0)	179 (16.2)	234 (19.6)	744 (17.6)	
Respiratory organs (C30–39)	63 (7.1)	76 (7.2)	86 (7.8)	100 (8.4)	325 (7.7)	
Bone, cartilage, melanoma (C40–43)	18 (2.0)	32 (3.0)	27 (2.4)	27 (2.3)	104 (2.5)	
Breast (C50)	181 (20.4)	215 (20.4)	204 (18.5)	220 (18.5)	820 (19.4)	
Female genital (C51–58)	125 (14.1)	136 (12.9)	145 (13.1)	164 (13.8)	570 (13.5)	
Male genital (C60–63)	97 (10.9)	139 (13.2)	143 (13.0)	126 (10.6)	505 (11.9)	
Urinary organs (C64–68)	34 (3.8)	24 (2.3)	39 (3.5)	25 (2.1)	122 (2.9)	
Eye, brain, thyroid etc. (C69–75)	41 (4.6)	56 (5.3)	53 (4.8)	67 (5.6)	217 (5.1)	
Haematopoietic (C81–96)	74 (8.3)	87 (8.3)	95 (8.6)	106 (8.9)	362 (8.5)	
Other and unspecified	53 (6.0)	57 (5.4)	69 (6.2)	73 (6.1)	252 (5.9)	
All sites but skin (C00–96bC44)	887 (100.0)	1054 (100.0)	1104 (100.0)	1191 (100.0)	4236 (100.0)	





## Elsewhere2 (2003–2006)

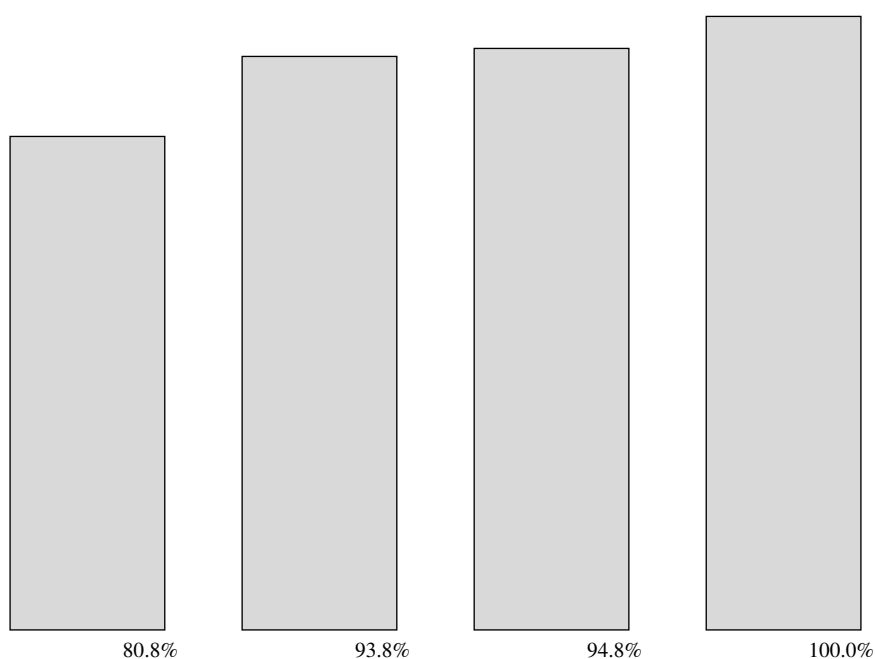
CI5 volume X (editorial table 1)  
ASR in major diagnosis groups in single calendar years of observation

SITE	MALE					Total
	2003	2004	2005	2006		
Lip, oral cavity and pharynx (C00–14)	20.4 (12.2)	19.7 (9.4)	23.3 (10.7)	18.6 (8.4)	20.5 (10.0)	
Digestive organs (C15–26)	34.0 (20.3)	45.9 (21.9)	35.7 (16.4)	48.0 (21.8)	41.0 (20.1)	
Respiratory organs (C30–39)	21.9 (13.1)	27.4 (13.1)	28.9 (13.3)	30.2 (13.7)	27.2 (13.3)	
Bone, cartilage, melanoma (C40–43)	3.2 (1.9)	4.0 (1.9)	4.6 (2.1)	5.5 (2.5)	4.3 (2.1)	
Male genital (C60–63)	50.3 (30.0)	70.6 (33.7)	67.8 (31.2)	58.1 (26.4)	61.8 (30.3)	
Urinary organs (C64–68)	10.0 (6.0)	6.9 (3.3)	13.7 (6.3)	9.5 (4.3)	10.1 (4.9)	
Eye, brain, thyroid etc. (C69–75)	4.7 (2.8)	6.3 (3.0)	5.2 (2.4)	9.3 (4.2)	6.4 (3.1)	
Haematopoietic (C81–96)	13.7 (8.2)	16.1 (7.7)	22.2 (10.2)	26.5 (12.0)	19.8 (9.7)	
Other and unspecified	9.3 (5.6)	12.5 (6.0)	15.9 (7.3)	14.4 (6.5)	13.1 (6.4)	
All sites but skin (C00–96bC44)	167.6 (100.0)	209.3 (100.0)	217.5 (100.0)	220.1 (100.0)	204.1 (100.0)	

SITE	FEMALE					Total
	2003	2004	2005	2006		
Lip, oral cavity and pharynx (C00–14)	2.6 (1.5)	3.4 (1.7)	4.5 (2.3)	2.2 (1.0)	3.2 (1.6)	
Digestive organs (C15–26)	25.9 (14.7)	28.5 (14.6)	30.0 (15.5)	38.3 (18.1)	30.8 (15.8)	
Respiratory organs (C30–39)	6.7 (3.8)	7.1 (3.6)	9.3 (4.8)	10.7 (5.0)	8.5 (4.4)	
Bone, cartilage, melanoma (C40–43)	3.6 (2.0)	5.9 (3.0)	3.4 (1.8)	3.6 (1.7)	4.1 (2.1)	
Breast (C50)	60.1 (34.0)	68.5 (35.0)	64.5 (33.4)	67.5 (31.8)	65.2 (33.5)	
Female genital (C51–58)	39.3 (22.3)	44.0 (22.5)	44.6 (23.1)	50.0 (23.6)	44.6 (22.9)	
Urinary organs (C64–68)	4.2 (2.4)	3.0 (1.5)	3.2 (1.6)	1.0 (0.5)	2.8 (1.4)	
Eye, brain, thyroid etc. (C69–75)	9.9 (5.6)	12.7 (6.5)	11.0 (5.7)	12.8 (6.0)	11.6 (6.0)	
Haematopoietic (C81–96)	14.0 (8.0)	14.5 (7.4)	12.9 (6.7)	13.6 (6.4)	13.8 (7.1)	
Other and unspecified	10.3 (5.8)	7.9 (4.1)	9.8 (5.1)	12.3 (5.8)	10.1 (5.2)	
All sites but skin (C00–96bC44)	176.5 (100.0)	195.5 (100.0)	193.3 (100.0)	211.9 (100.0)	194.6 (100.0)	

SITE	BOTH SEXES					Total
	2003	2004	2005	2006		
Lip, oral cavity and pharynx (C00–14)	10.0 (5.8)	10.1 (5.1)	12.3 (6.2)	9.0 (4.2)	10.4 (5.3)	
Digestive organs (C15–26)	29.1 (17.0)	35.4 (17.9)	32.2 (16.1)	41.9 (19.8)	34.8 (17.8)	
Respiratory organs (C30–39)	12.9 (7.5)	15.1 (7.6)	17.4 (8.7)	18.6 (8.8)	16.0 (8.2)	
Bone, cartilage, melanoma (C40–43)	3.4 (2.0)	5.2 (2.6)	4.0 (2.0)	4.3 (2.1)	4.2 (2.2)	
Breast (C50)	34.7 (20.3)	39.3 (19.8)	37.1 (18.5)	38.9 (18.4)	37.5 (19.2)	
Female genital (C51–58)	22.7 (13.3)	25.6 (12.9)	25.8 (12.9)	29.0 (13.7)	25.8 (13.2)	
Male genital (C60–63)	19.9 (11.7)	27.9 (14.0)	26.5 (13.2)	22.5 (10.6)	24.2 (12.4)	
Urinary organs (C64–68)	6.6 (3.8)	4.4 (2.2)	7.4 (3.7)	4.4 (2.1)	5.7 (2.9)	
Eye, brain, thyroid etc. (C69–75)	7.6 (4.5)	10.1 (5.1)	8.5 (4.2)	11.0 (5.2)	9.3 (4.8)	
Haematopoietic (C81–96)	14.2 (8.3)	15.5 (7.8)	16.8 (8.4)	18.7 (8.8)	16.3 (8.3)	
Other and unspecified	9.8 (5.8)	9.7 (4.9)	12.4 (6.2)	13.0 (6.2)	11.3 (5.8)	
All sites but skin (C00–96bC44)	170.9 (100.0)	198.3 (100.0)	200.4 (100.0)	211.3 (100.0)	195.6 (100.0)	

ALL SITES BUT SKIN - BOTH SEXES				
2003	2004	2005	2006	

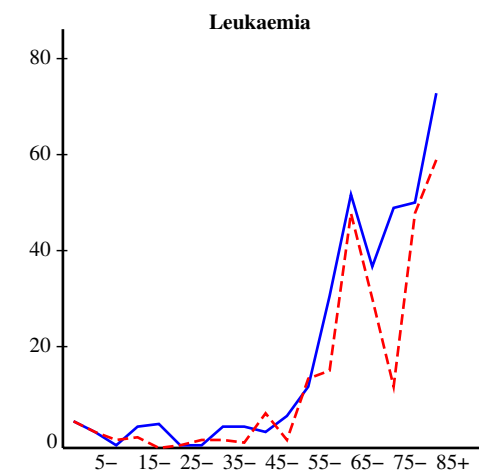
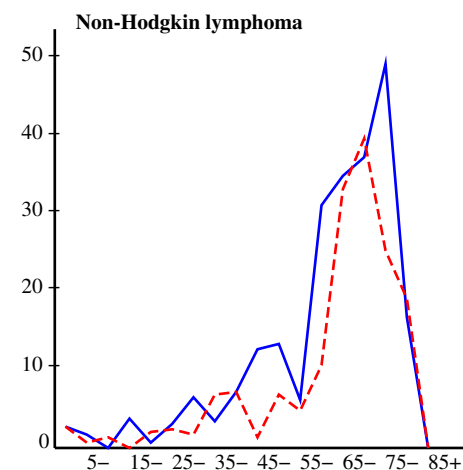
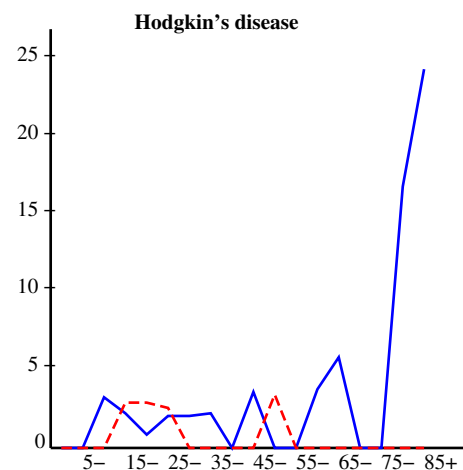
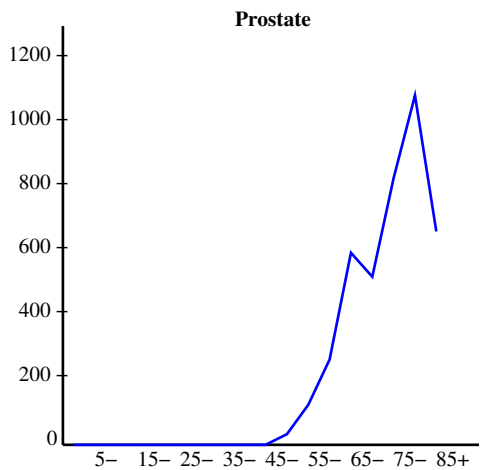
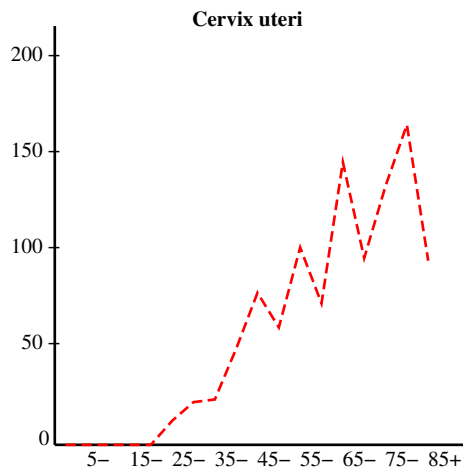
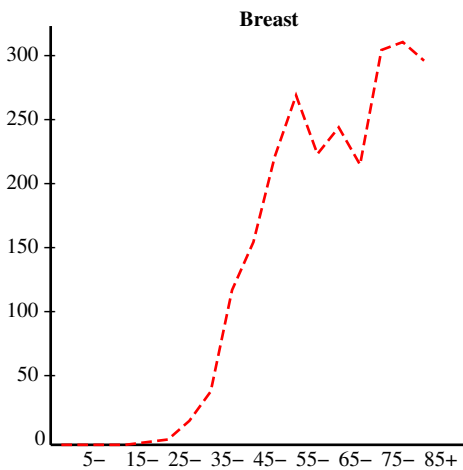
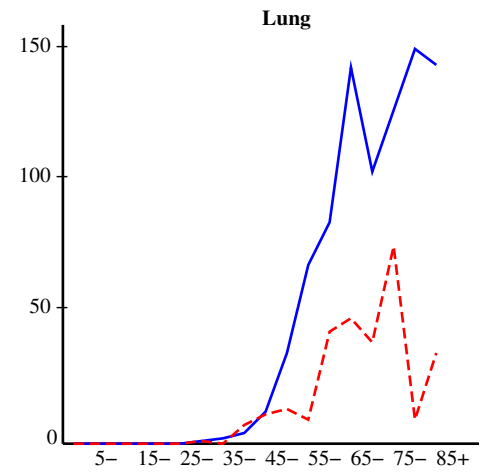
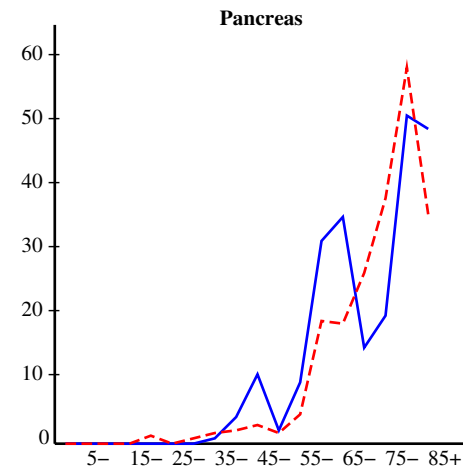
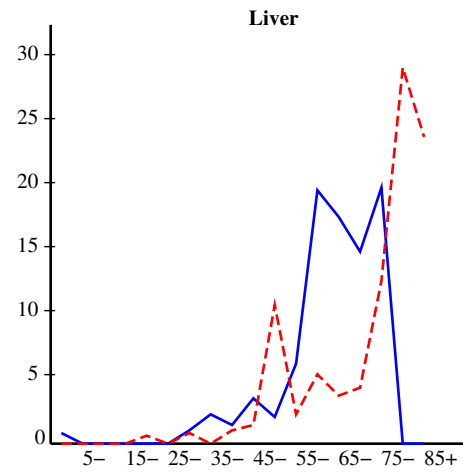
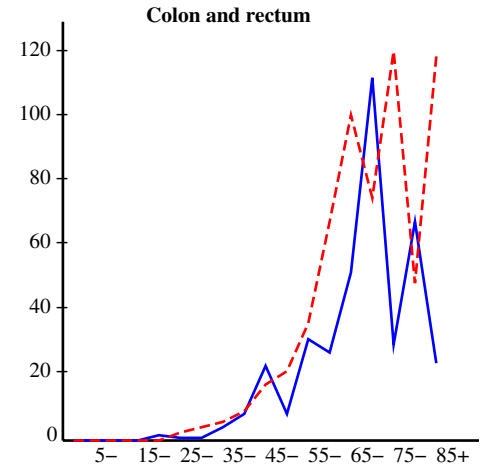
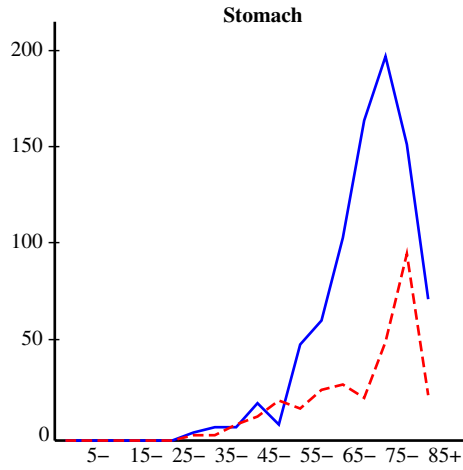
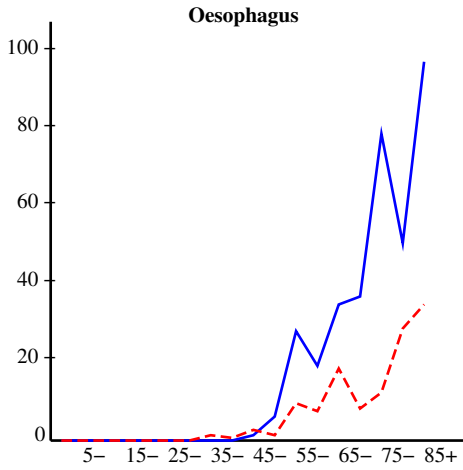


Population denominator available for 4 year(s)



# Elsewhere2 (2003–2006)

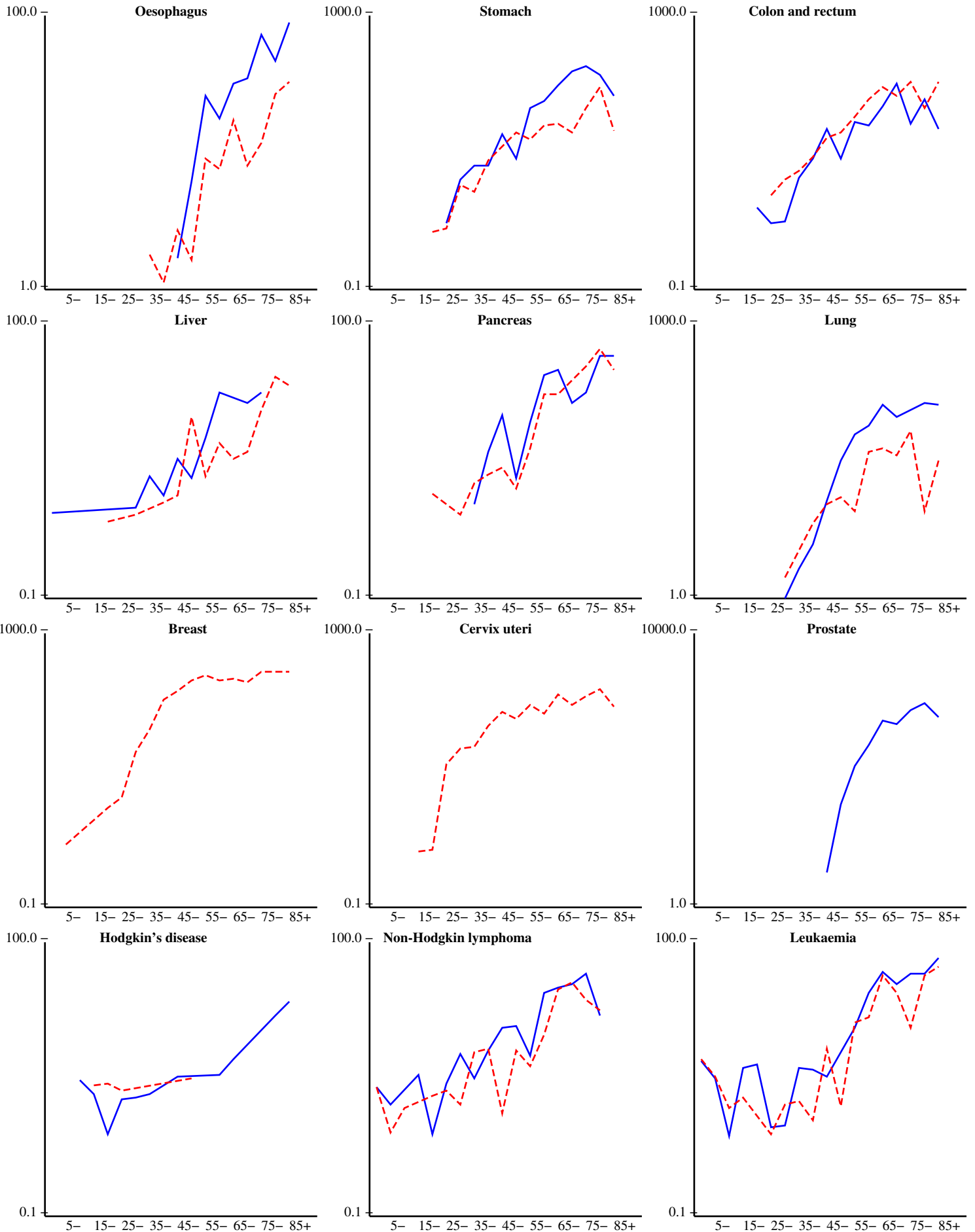
CI5 volume X (editorial table 2)  
Age-specific rates graphs for major diagnosis groups





# Elsewhere2 (2003–2006)

CI5 volume X (editorial table 2)  
Age-specific rates graphs for major diagnosis groups









Elsewhere2 (2003–2006)  
International comparison and M/I ratios  
CI5 volume X (editorial table 4)

MALE

SITE	Cases	ASR (se)	O/E	MV(%)	DCO(%)	M/I(%)	ICD-10
Lip, oral cavity and pharynx	176	20.5 ( 1.59)	1.64	93.8	–	42.6	C00–14
Oesophagus	44	5.3 ( 0.82)	0.63	81.8	–	93.2	C15
Stomach	136	15.9 ( 1.41)	0.65	89.0	0.7	63.2	C16
Colon, rectum and anus	80	9.2 ( 1.06)	0.44	81.2	–	47.5	C18–21
Liver	22	2.6 ( 0.58)	0.70	54.5	–	159.1	C22
Pancreas	37	4.4 ( 0.75)	0.86	51.4	5.4	118.9	C25
Larynx	73	8.9 ( 1.07)	1.21	89.0	–	56.2	C32
Lung (incl. trachea)	140	17.2 ( 1.49)	0.61	72.1	1.4	105.7	C33–34
Melanoma of skin	18	1.8 ( 0.45)	0.49	100.0	–	16.7	C43
Prostate	473	58.7 ( 2.78)	1.00	89.2	0.2	29.4	C61
Testis	14	1.1 ( 0.31)	0.33	92.9	–	–	C62
Kidney etc.	32	3.6 ( 0.66)	0.58	62.5	–	37.5	C64–66
Bladder	54	6.5 ( 0.90)	0.56	85.2	1.9	33.3	C67
Brain, central nervous system	50	5.0 ( 0.75)	0.90	62.0	–	60.0	C70–72
Thyroid	6	0.6 ( 0.25)	0.32	83.3	–	33.3	C73
Lymphoma	115	12.0 ( 1.17)	0.90	98.3	–	40.9	C81–88,C90
Leukaemia	74	7.8 ( 0.95)	0.99	95.9	–	56.8	C91–95
Ill-defined (4.2% of total)	74	8.7 ( 1.05)	0.69	74.3	1.4	71.6	C76–80
All sites but non-melanoma skin	1759	204.1 ( 5.04)	0.81	84.9	0.5	53.5	C00–96bC44

FEMALE

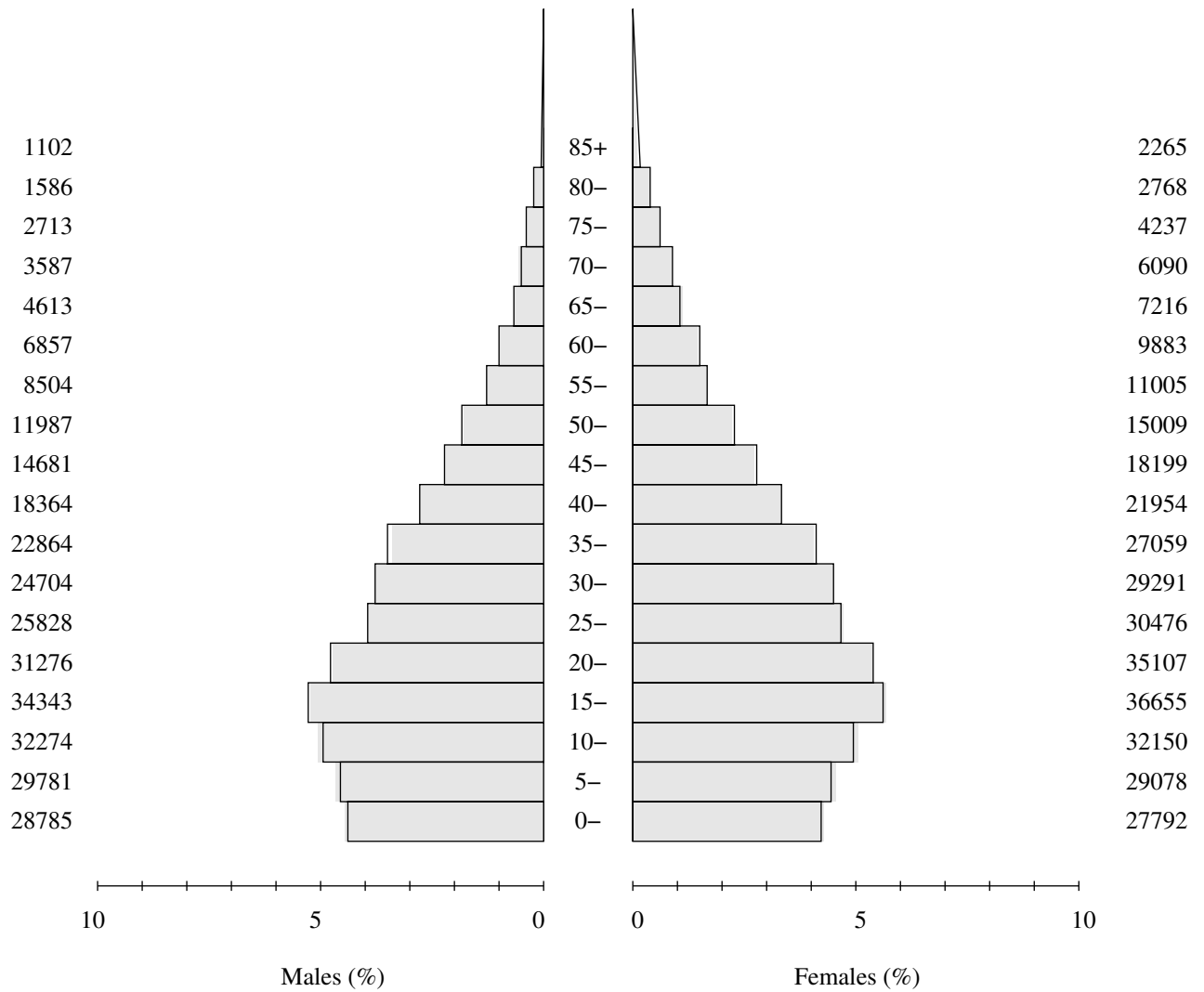
SITE	Cases	ASR (se)	O/E	MV(%)	DCO(%)	M/I(%)	ICD-10
Lip, oral cavity and pharynx	39	3.2 ( 0.52)	0.89	79.5	–	41.0	C00–14
Oesophagus	28	2.2 ( 0.43)	0.90	85.7	3.6	50.0	C15
Stomach	87	6.6 ( 0.73)	0.57	78.2	1.1	70.1	C16
Colon, rectum and anus	165	13.4 ( 1.07)	0.76	84.2	–	35.2	C18–21
Liver	22	1.6 ( 0.35)	0.66	50.0	–	250.0	C22
Pancreas	45	3.4 ( 0.52)	0.84	48.9	2.2	133.3	C25
Larynx	10	0.9 ( 0.28)	0.84	70.0	–	20.0	C32
Lung (incl. trachea)	82	6.8 ( 0.77)	0.82	59.8	1.2	102.4	C33–34
Melanoma of skin	27	2.1 ( 0.42)	0.55	96.3	–	37.0	C43
Breast	820	65.2 ( 2.33)	1.11	93.8	0.1	22.8	C50
Cervix uteri	370	28.6 ( 1.52)	1.05	95.4	0.8	23.8	C53
O&U part of uterus	79	6.5 ( 0.74)	0.68	94.9	–	55.7	C54–55
Ovary	88	7.0 ( 0.77)	0.89	83.0	–	55.7	C56
Kidney etc.	18	1.5 ( 0.35)	0.47	61.1	–	33.3	C64–66
Bladder	18	1.4 ( 0.33)	0.45	94.4	–	50.0	C67
Brain, central nervous system	44	3.5 ( 0.53)	0.81	47.7	2.3	120.5	C70–72
Thyroid	103	7.6 ( 0.77)	1.09	86.4	–	6.8	C73
Lymphoma	102	7.9 ( 0.80)	0.84	98.0	2.0	38.2	C81–88,C90
Leukaemia	71	5.9 ( 0.72)	1.05	98.6	–	69.0	C91–95
Ill-defined (3.7% of total)	91	7.0 ( 0.76)	0.73	62.6	2.2	101.1	C76–80
All sites but non-melanoma skin	2477	194.6 ( 4.01)	0.89	85.9	0.5	43.6	C00–96bC44

Data compared with that from 12 cancer registries in the region. (See list next page)  
Significant lower (<) or higher (>) changes are marked in bold.



## Elsewhere2 (2003–2006)

CI5 volume X (editorial table 5)  
Population pyramids



303849	Total	346234
281130	V9 (1999–2002) grayed pyramid	320989
V10/V9 1.08		V10/V9 1.08